



BoardSafe

BoardSafeDocks.com | 610.899.0286

Case Study- PA Barge Club / Boathouse #4



Project Location: Boathouse #4, Boathouse Row, Schuylkill River, Philadelphia, PA

Project Contact: Michael J. Ragan, President (Former Chairman of Dad Vail Regatta) 215.704.5656 / mjragan@msn.com

Project Description:

The original dock and gangway system were manufactured from pressure treated lumber. The dock system was in need of replacement. **BoardSafe** Docks designed, manufactured and installed a new 50 Series Low Profile Rowing Docks, and gangway system.

- Main Dock – 16-feet by 58-feet
- Custom floating dock wedge section
- 24-foot by 24-foot gangway with custom angled sections

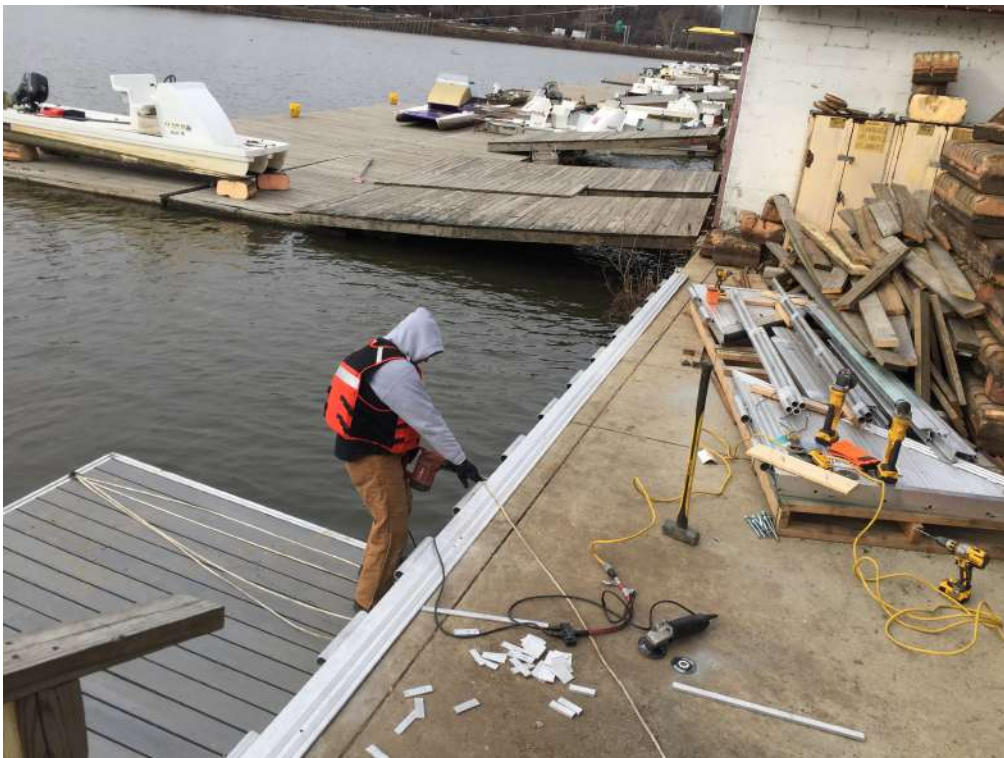
Services and Products supplied by *BoardSafe Docks*

- Structural Engineering
 - Dock System
- Design
 - Floating Docks
 - Gangways
 - Mounting System to existing concrete bulkhead
- Components Manufactured and Installed
 - **BoardSafe** 50 Series Low Profile Floating Docks
 - **BoardSafe** HD Series Gangways

Project Photos- BoardSafe 50 Series Low Profile Dock System



Demolition of Pressure Treated Docks



*Installation of **BoardSafe** Mounting Angle*



*Attachment of **BoardSafe** Mounting Angle to Existing Concrete Bulkhead*



*Setting first **BoardSafe** Gangway Section- Supplemental flotation installed under each gangway section*



Installing **BoardSafe** 50 Series Low Profile Rowing Docks



Installing **BoardSafe** Connection Strips between dock sections



Completed PA Barge Club Dock and Gangway



Completed PA Barge Club Dock and Gangway

Letter of Reference from Michael J. Ragan, President (Former Chairman of Dad Vail Regatta)

**Scott Tihansky
Northeast Products and Services, Inc.
130 West High St.
Topton, Pa., 19562**

May 15, 2017

Dear Scott:

I want to thank you and Northeast for the fabulous job you did at Pennsylvania Barge Club. The demolition and removal of our old ramp and dock as well as the construction and installation of our new ramp and dock was flawless and without any headaches on our part during the project. And the finished product is absolutely beautiful. We are the envy of our neighbors on Boathouse Row in Philadelphia.

Your attention to detail as well as your quick responsiveness to any of our concerns was greatly appreciated. Your ability to respond to our needs and requests was certainly very gratifying especially when a construction project can be such a harrowing experience. In this case, it will be nothing but pleasant memories.

Both our members and tenants were amazed at how efficient the project was managed. And, all are extremely happy with the finished project.

We certainly picked the right contractor for the job and for that I am extremely grateful.

Sincerely,

**Michael J Ragan
President**

BoardSafe Docks are designed, engineered and manufactured by **Northeast Products and Services, Inc.**, Tipton, PA. For more information regarding our 50 Series Low Profile Rowing Docks, Gangways and Accessories please contact our Design / Engineering Department at 610.899.0286.



BoardSafe

BoardSafeDocks.com | 610.899.0286

Northeast Products and Services, Inc.

130 West High Street
Tipton, PA 19562
610.899.0286 *office*
484.575.9201 *fax*